



Das Auto.

# The Golf Plus

Volkswagen Information Service. Telephone 0800 333 666  
Internet: [www.volkswagen.co.uk](http://www.volkswagen.co.uk)  
© Volkswagen Group United Kingdom Limited 2011.  
Issue: 1 February 2011. Printed in UK.  
PVW400PLUS

# The Golf Plus





#### 04 The Golf Plus

- 16 The Golf Plus S and S BlueMotion Technology
- 18 The Golf Plus SE and SE BlueMotion Technology
- 20 Safety
- 22 BlueMotion Technology
- 24 Engines and gearboxes
- 26 Optional equipment
- 31 Wheels
- 32 Paint
- 36 Upholstery and combinations
- 38 Technical specification
- 40 Technology
- 41 Dimensions
- 42 Volkswagen service



Model shown is Golf Plus SE with optional silver anodised roof rails and metallic paint.



# **T** car. Endless possibilities.

Introducing the Golf Plus. Specially created for those who want to get a little bit more out of life. Not only does it offer masses of extra space, but more ways of using it, thanks to a whole wealth of clever features, designed to increase its functionality, comfort and safety. Which means, if you're looking for a car offering the ultimate in flexibility, alongside the legendary build quality, style and refinements of a Golf hatchback, the Golf Plus more than delivers. Never has one car offered so many possibilities.



Model shown is Golf Plus SE with optional silver anodised roof rails, 17" 'Seattle' alloy wheels, 'Vienna' leather upholstery and metallic paint.



**1,007 millimetres.  
Enough headroom for even  
the tallest passengers.**



Interior shown is Golf Plus SE with optional 'Vienna' leather upholstery, carpet mats, multifunction steering wheel, 2Zone electronic climate control and metallic paint.





The **Golf Plus badge** is made from a high-quality, scratch-resistant material, and is a stylish addition to the rear.



The **body-coloured door mirrors with integrated indicator light** add a further distinctive design feature and can easily be seen in traffic, enhancing safety levels.



The optional **silver anodised roof rails** enhance aesthetics as well as functionality, its special finish protecting against corrosion and making it especially durable. Optional on SE and SE BlueMotion Technology models.



**Black housing around the halogen main beam with integrated indicator light and permanent daytime driving lights** provides a distinctive detail, integrating seamlessly with the radiator grille and giving the Golf Plus its characteristic front.



The **distinctive roundel** proudly stands out on the **black, high gloss radiator grille** and helps define the face of the Golf Plus. **Chrome trimmed radiator grille louvre inserts** on SE models add a sporty touch and completes its stylish image.



The **tinted rear windows from the B pillar back** reduce sunlight by up to 65%, ensuring a pleasant temperature within the cabin, while protecting rear passengers and luggage from unwelcome glare and enhancing privacy. Optional on SE and SE BlueMotion Technology models.



The **twin exhaust tailpipe** adds a visible sporty look to the rear of the Golf Plus.

Excluding 1.2 litre TSI 85 PS, 1.6 litre TDI 90 PS and 1.6 litre TDI 105 PS engines.

## Design

From whichever angle you look at the Golf Plus, its stylish exterior cannot fail to impress. Strong bodylines, distinctive edges and a streamlined shape all demonstrate the high levels of quality, comfort and performance delivered by this iconic new Volkswagen design. And while its appearance hints at the exceptional spaciousness within, it's the exterior aesthetics that really turn the eye. Whether you're looking at the front, side or the rear.



The **rear view of the Golf Plus** is particularly impressive. Distinctive 'Cherry red' tail lights flow smoothly into the dynamic contours, complementing the overall design, and enhanced by clearly defined quick-response lights incorporating LED technology. The body-coloured rear bumper provides the perfect finishing touch.



**Numerous storage compartments.  
A million different combinations.**



Where's the MP3 player? Next to the sunglasses? How about some spare change for parking? And what about the mobile phone? Whatever you need to store in the Golf Plus, up to 25 storage compartments provides you with an infinite number of possibilities, ensuring you keep all your essentials within easy reach. So, long journey or short, everything you need has its own home. From a water bottle, to lipstick, to CDs. All you have to do is remember where you put it.



Images shown feature standard and optional equipment and may not necessarily reflect UK upholstery availability.



# 186

hands – or 93 people – have helped assemble the Golf Plus.

# 154

countries are home to the Golf Plus, allowing its exceptional comfort and quality to gain a truly international status.



# 20

millionth of a millimetre – that's the thickness (or should we say 'thinness') of the galvanised protective coating covering the Golf Plus' chassis, which goes through 20 stages before your choice of paint is applied.

# 4,000

hours and about 4,500 kilometres of demanding testing – that's what every vehicle has to go through before the quality of its running gear is proven. From extreme climate conditions to salt water and bumpy roads, the Volkswagen test track shows no mercy.

# 10.8

metre turning circle ensures the Golf Plus has the agility to manoeuvre easily, whether parking in a tight space or driving in city traffic. And it's still so spacious inside.

# 7

gears on our 1.4 litre TSI DSG's transmission, ideal for maximising fuel economy and keeping CO<sub>2</sub> emissions down – even more efficient than the equivalent manual.

# 12

year body protection warranty against rust, gives you total peace of mind whatever the weather.

# 320

Nm of torque is produced between 1,750-2,500 rpm on the 2.0 litre 140 PS TDI diesel engine.

# 644

kilograms\* is the maximum weight you can load into your Golf Plus – just in case you ever need to give a lift to a fully grown polar bear.

# 2

# 90,000

nodal points are fully tested in a high-tech crash simulation, replicating the many different stresses and forces that occur in an actual crash situation – ensuring the highest levels of protection for you and your passengers.

$FL = v \times A \times cW \times \frac{1}{2} PL$

is the formula used to calculate the aerodynamics of the Golf Plus. Rounded angles, a concave roofline and the flat angle of the windscreen all combine to keep wind resistance to a minimum, ensuring undisturbed airflow and enhancing performance.

\* Figure based on 2.0 litre TDI 140 PS engine. The maximum payload varies by engine, please see pages 38-39 for further information.

Model shown is Golf Plus S with optional black roof rails and metallic paint.



Over

# 5000

**miles of freedom. On one tank of petrol.**

Yes, that's right – petrol. Thanks to the economical engines of the Golf Plus, you can cover more than 500 miles\* on a single tank of fuel, not only with a diesel engine, but now with a TSI petrol engine too. A combination of direct fuel injection and intelligent turbocharging technology delivers exceptional engine efficiency, ensuring TSI engines achieve extremely economic driving, while providing maximum drive enjoyment. And it's not just your wallet that will benefit. Due to the lower CO<sub>2</sub> emissions, so will the environment.

\* Up to 542 miles achieved on the Combined cycle for the 1.4 litre TSI 122 PS DSG. Please see pages 38-39 for fuel consumption and CO<sub>2</sub> emission figures.



Model shown is Golf Plus SE with optional silver anodised roof rails, 17" 'Seattle' alloy wheels, 'Vienna' leather upholstery and metallic paint.



## The Golf Plus S and S BlueMotion Technology

As soon as you sit in the Golf Plus S, you'll experience the uncompromising attention to detail and the high quality of the materials used throughout. From the contemporary upholstery to the chrome-ringed instrument panel, the cabin exudes a feeling of well-being, and is even more luxurious, comfortable and spacious than you would have guessed from the exterior. From the black front radiator grille, rear roof spoiler and headlights with permanent daytime driving lights to the body-coloured door handles, front and rear bumpers and door mirrors with integrated indicators, you know you're looking at something special. But even the superior aesthetics of the distinctive exterior cannot prepare you for the luxury within. Opting for BlueMotion Technology on the Golf Plus S helps improve fuel consumption, achieving up to 65.7 mpg over the Combined fuel cycle and producing a CO<sub>2</sub> emission figure of 114 g/km. To read more on BlueMotion Technologies, please see pages 22-23.



The white adjustable instrument illumination is not only stylish, but very easy to read, whatever the light conditions.

Interior shown is Golf Plus S.



The badge at the rear symbolises its environmental credentials when 'BlueMotion Technology' is specified. For more information on BlueMotion Technologies, please see pages 22-23.



Front and rear electric windows are conveniently located in the driver's door for ease of use.



'Climatic' air conditioning with semi-automatic control produces a pleasant, consistent temperature throughout the cabin.



15 inch steel wheels with full size wheel trims give a stylish look to the Golf Plus S. S BlueMotion Technology models feature low rolling resistance tyres as standard.



Electric windows in the front and rear, a height and reach adjustable three-spoke steering wheel, and speed-sensitive, power-assisted steering are all fitted as standard. The comfort continues with a height adjustable driver's seat, reading lights, cooled glove compartment and an RCD 210 radio/MP3 compatible CD player with four speakers, not to mention an array of storage compartments. Other features include 'Climatic' semi-automatic air conditioning, electrically heated and adjustable door mirrors and remote folding keys for the central locking system, all designed to make driving as relaxing as possible, while details such as a multifunction computer (Midline) including visual gear change recommendation on 1.4 litre 122 PS models, simply make life that little bit easier. There is even a convenient hill hold function fitted as standard which, for approximately two seconds, prevents your Golf Plus from rolling back when pulling away on a gradient or during a hill start. The S BlueMotion Technology model features a multifunction computer (Highline) which includes a visual gear change recommendation for optimum fuel consumption. With adjustable white instrument lighting and the red illumination design on all dials providing an air of exclusivity throughout, the Golf Plus S and S BlueMotion Technology offer so much they have to be experienced to be fully appreciated.

Interior shown is Golf Plus S.



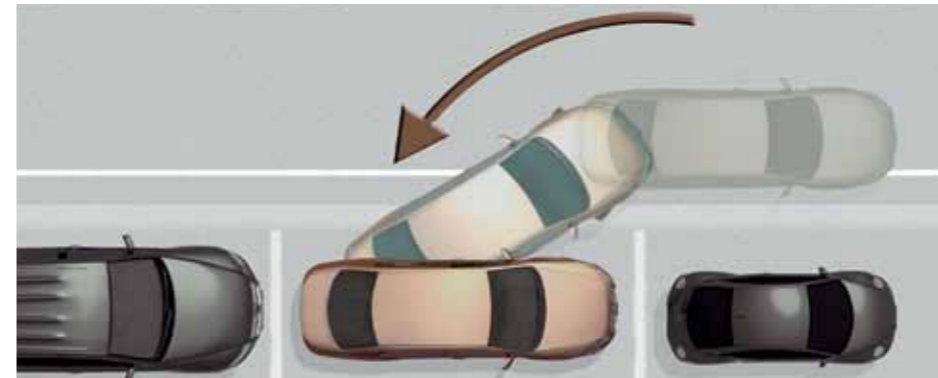


Cruise control, multifunction computer (Highline), Park Assist, parking sensors and a rain sensor are all fitted as standard, as are an alarm with interior protection, auto-dimming rear view mirror and coming/leaving home lighting function. Between the two front seats there is a comfortable centre armrest containing a storage compartment, and a covered storage area can be found in the roof console. As well as storage pockets and folding tables on the back of the front seats, the rear also has air vents, cup holders and a 12V socket, while the luggage compartment features additional storage areas, luggage net and a further 12V socket. With other features including reading lights to the front and rear, illuminated vanity mirrors and an illuminated front footwell, you can easily see why the Golf Plus SE and SE BlueMotion Technology offers such a formidable package.

Interior shown is Golf Plus SE.

## The Golf Plus SE and SE BlueMotion Technology

The Golf Plus SE and SE BlueMotion Technology epitomise the height of luxury, with everything designed for your total comfort and driving pleasure. The story starts as you approach the SE, with stylish 16 inch 'Atlanta' alloy wheels, and a sporty black radiator grille with chrome-plated louvre inserts setting the scene. Inside, contemporary 'Plaza' upholstery is both comfortable and inviting, while the leather trimmed three-spoke steering wheel, gear knob and handbrake grip add an extra touch of luxury. The front comfort seats feature height and lumbar adjustment, while an RCD 310 radio/MP3 compatible CD player with eight speakers provides exceptional acoustics and also offers an AUX-in socket in the glovebox (in lieu of light) for connection to an external multimedia source such as an iPod or MP3 player. Opting for BlueMotion Technology on the Golf Plus SE helps improve fuel consumption, achieving up to 65.7 mpg over the Combined fuel cycle and producing a CO<sub>2</sub> emission figure of 114 g/km. To read more on BlueMotion Technologies, please see pages 22-23.



When passing a parking space at up to 19 mph, the **Park Assist** system with ultrasonic front and rear parking sensors, compares the space available with the length of the vehicle. If the space is suitable, which can be as little as 1.1 m longer than the Golf Plus, the Park Assist parallel parking assistant automatically controls the steering as soon as you engage reverse gear. All you have to do is operate the accelerator, clutch and brake, while keeping a good lookout. **Parking sensors** also assist in less challenging parking manoeuvres by emitting both audible and visual signals, alerting the driver to any obstacles: the closer you are to an obstacle the faster the sound frequency. In addition an **Optical Parking Display** extends the functions of the parking sensors by indicating your position on the RCD 310's monochrome audio display during parking.



The badge at the rear symbolises its environmental credentials when '**BlueMotion Technology**' is specified. For more information on BlueMotion Technologies, please see pages 22-23.



The **rain sensor** activates the windscreen wipers and adjusts their speed to the intensity of the rainfall. With similar ingenuity, the **automatic dimming interior rear-view mirror** darkens if lights from a following car are too bright.



The **RCD 310 radio/MP3 compatible CD player** features eight speakers while its large screen clearly displays radio station choices or the track listings of a compatible device connected to the optional Multi Device Interface (MDI).



**16 inch 'Atlanta' alloy wheels** make a lasting impression with their contemporary elegance. SE BlueMotion Technology models feature low rolling resistance tyres as standard.



## Safety

The Golf Plus is not only practical and versatile, but it also offers intelligence too, as demonstrated by its first class safety specification designed to help you manage such occurrences as bad weather, sharp bends and tight parking spaces. From curtain, front and side impact airbags to an Electronic Stabilisation Programme, these active and passive safety features help make every journey as safe as possible for all the occupants of the Golf Plus.



A curtain airbag system, front seat side impact airbags and airbags for the driver and front passenger are provided as standard in the Golf Plus. The combined curtain airbag system for the driver and front passenger is deployed by crash sensors in the event of an accident to cushion the upper body and minimise the risk of injury. If a collision is registered, the airbag control device ignites the gas generator, which fills the airbags within 30 to 40 milliseconds. It goes without saying that the front passenger airbag can be deactivated, which is essential, if you wish to fit a child seat on the front passenger seat.

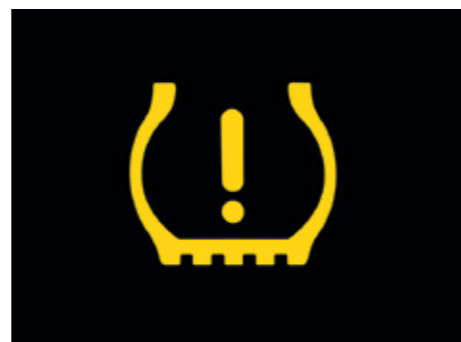
Image shown is for illustration purposes only and may not necessarily reflect UK specification.



Front head restraints are height-adjustable and safety-optimised, so that in the event of a collision, the distance between the head and head restraint is reduced, thereby minimising the risk of whiplash injuries.



For even greater safety, you can add a side airbag system for the rear passengers. Optional on all models.



In the event of a change in air pressure, the optional flat tyre indicator symbol appears in the multifunction display, advising the driver to rectify the situation. Optional on all models.



All five seats in the Golf Plus feature three-point automatic seat belts. In the front, the seat belts are height-adjustable and fitted with belt tensioners, which are designed to react within milliseconds to the airbags' trigger mechanisms.



Fastening seat belts before every journey is a vital safety precaution – the seat belt warning buzzer and light for the driver and front passenger ensures you don't forget this necessary measure, even on short journeys.



The front (ventilated) and rear disc brakes deliver excellent thermal performance, even if there is a sharp rise in the temperature of the brakes.



In the event of poor visibility, the front fog lights with static cornering function and chrome surround provide better illumination of the road ahead and are thus highly recommended for maximum safety. Optional on all models.



The Electronic Stabilisation Programme (ESP), with counter-steering assistance, prevents the vehicle going out of control in critical driving situations by intervening instantaneously in the brake and engine management systems and controlling the speed of individual wheels. The vehicle thus achieves maximum directional stability and can be brought back under control.





**To help reduce the impact on our environment, not only have we come up with a solution, we've designed many.**

BlueMotion Technologies is our contribution to sustainable motoring. This means we offer optimum solutions for every demand, which makes driving more fuel efficient. Lower fuel consumption and lower emission diesel engines allied with BlueMotion Technologies are friendlier to the environment and your wallet, without having to give up everyday practicality and comfort.

The S BlueMotion Technology builds over the already well equipped Golf Plus S, with low rolling resistance tyres, supplemented by innovative technology to help keep fuel consumption and emissions impressively low, and unique 'BlueMotion Technology' badging to make it instantly recognisable. The Start/Stop system momentarily switches off the engine when the vehicle is stationary, in neutral and the clutch disengaged. This is notified to the driver on the multifunction computer (Highline), then disappears when driving is resumed. The multifunction computer includes a visual gear change recommendation for optimum fuel consumption, while recuperation, a regenerative braking system helps utilise energy during braking and deceleration boosting the alternator voltage which in turn recharges the battery.

If you specify the SE BlueMotion Technology you have the same high specification of the SE, plus all the benefits of BlueMotion Technology.

Externally, Volkswagen's 'BlueMotion Technology' badging identifies the cleanest, most energy-efficient cars in our range. So when you see this logo you'll know we're talking about ways to reduce emissions and the cost of your motoring. Environmental technologies of today are meeting the driving challenges of tomorrow with one very important aim: to reduce the impact of our cars on the environment for future generations.



The unique 'BlueMotion Technology' badging sits neatly below the stylish rear light clusters.



16 inch 'Atlanta' alloy wheels with 205/55 R16 low rolling resistance tyres are standard on SE BlueMotion Technology models.





Available as a **five speed or six speed manual**, these gearboxes transmit power with short, accurate shifts and very smooth handling, making it easy to drive at the right engine speed.



The dual clutch **Direct Shift Gearbox (DSG)** represents a milestone in the development of the latest gearbox technology. This innovative automatic gearbox from Volkswagen shifts smoothly and imperceptibly into the pre-selected next gear. Such extremely short reaction times and direct response behaviour make dynamic acceleration twice as much fun. Depending on the engine specification, the six or seven speed gearbox is not only highly dynamic, but also fuel efficient.

## Engines and gearboxes

Volkswagen's ground-breaking engine and gearbox technology ensures exceptional performance. A choice of some of the most innovative engines available means you can look forward to driving a car delivering the ultimate sporty drive, yet still offering great fuel economy and environmental credentials.



The combination of direct fuel injection and intelligent turbocharging technology enables **petrol engines with TSI technology** to work particularly efficiently, offering such advantages as high performance, high torque and reduced fuel consumption. The TSI engine features a sophisticated turbocharger, resulting in excellent driveability and performance throughout the range. The 1.4 litre 122 PS TSI engine can accelerate the Golf Plus to 62 mph in 10.2 seconds on its way to a top speed of 121 mph, where the law permits.



The **1.6 litre TDI 105 PS** provides a perfect blend of performance and economy. This common rail engine is capable of achieving 58.9 mpg on the Combined cycle, while producing only 126 g/km of CO<sub>2</sub>. When this engine is utilised with BlueMotion Technology the figures are even more impressive. The CO<sub>2</sub> is reduced to 114 g/km and with 65.7 mpg achieved on the Combined cycle, BlueMotion Technology models are both kinder to the environment and your pocket.



The **2.0 litre TDI 140 PS** engine with common rail technology is a highly efficient and quiet combustion engine, combining exceptional economy with impressive pulling power and smooth running. This engine is capable of producing 320 Nm of torque at 1,750-2,500 rpm yet produces only 132 g/km of CO<sub>2</sub>. Economy and performance figures are also impressive with 55.4 mpg achieved on the Combined cycle and acceleration to 62 mph in 9.8 seconds on its way to a top speed of 127 mph where the law permits.

Please see pages 38-39 for CO<sub>2</sub> emissions and fuel consumption figures.



**Countless options.  
Personalise to your  
exact requirements.**



Model shown is Golf Plus SE with optional silver anodised roof rails, front fog lights, 17" 'Seattle' alloy wheels, 'Vienna' leather upholstery and metallic paint.



## Optional equipment

The latest technologies in audio playback, state-of-the-art navigations systems and connectivity provide you with the ultimate multimedia experience, enabling you to do more and enjoy more than ever before in the Golf Plus.



The RCD 510 touch-screen radio/dash-mounted MP3 compatible six CD autochanger features a large 6½ inch colour display, with intuitive menu navigation and touch-screen operation. It also features an AUX-in socket for connection to an external multimedia source (e.g. iPod or MP3 player) and an SD memory card slot. Optional on SE and SE BlueMotion Technology models.



The RNS 510 DVD touch-screen navigation/radio system with integrated voice control will guide you to your destination using all but the last two digits of a UK postcode and includes a 6½ inch colour display. This ingenious system responds to spoken voice commands which control the navigation, CD and radio functions. It is possible to give spoken navigation instructions such as the county, city, up to five digits of a postcode, road names and house number. It also plays DVDs (when the vehicle is stationary) and music from the DVD drive, 30 GB hard drive or via an SD card. Optional on SE and SE BlueMotion Technology models.



The RCD 310 radio/MP3 compatible CD player features eight speakers with an output of 4 x 20 watts. It also features an AUX-in socket for connection to an external multimedia source (e.g. iPod or MP3 player). Optional on S and S BlueMotion Technology. Standard on SE and SE BlueMotion Technology models.



The Multi Device Interface (MDI) with iPod and USB cables enables you to connect and charge a compatible device, while track selection is viewed and selected via the vehicle's radio\* system. Optional on all models.

\* Must be ordered in conjunction with RCD 310, RCD 510 or RNS 510 DVD touch-screen navigation/radio systems.



Another option for your RCD 310 or RCD 510 is a DAB digital radio receiver, enabling you to listen to all the digital stations available in crystal clear digital sound. Optional on all models.

Must be ordered in conjunction with RCD 310 or RCD 510 radio systems. Radio featured is RCD 510.



Heated front seats form part of the Winter Pack, ensuring your total comfort, especially during the winter months. The automatically heated front windscreen washer nozzles are always ready for use, even when it's frosty, while headlight washers increase safety in poor conditions. The handy low washer fluid warning light will alert you when the fluids need to be topped-up. Optional on SE and SE BlueMotion Technology models.



The multifunction leather steering wheel is exceptionally user friendly, enabling you to control a whole host of functions, such as the radio or multifunction computer (Highline) display, without taking your hands off the wheel. Finished in high grade leather, it is pleasant to hold, as well as providing excellent grip and adding a touch of elegance to the interior. Optional on all models. On S and S BlueMotion Technology models, this option also includes a leather trimmed gear knob and handbrake grip.

Interior shown features optional 'Vienna' leather upholstery.



The three-spoke leather trimmed steering wheel enhances the sporty feel, of the Golf Plus and is echoed by the gear knob and handbrake grip also covered in high quality leather, enhancing the unique cockpit design. Optional on S and S BlueMotion Technology. Standard on SE and SE BlueMotion Technology models.



The Rear-view camera gives a clear view of the rear of the vehicle on the radio display, helping you park more easily and safely. Only in conjunction with the optional RCD 510 radio or RNS 510 DVD touch-screen navigation/radio system. Optional on SE and SE BlueMotion Technology models.

Interior shown features optional RCD 510 radio system. Not in conjunction with DAB digital radio receiver.





The **2Zone electronic climate control with automatic air recirculation system** features dual zone temperature control for the driver and front passenger, allowing each to select their individual preferred temperature. Optional on SE and SE BlueMotion Technology models.

Interior shown features optional RCD 510 radio system.



The **multifunction computer (Highline)** with vehicle set-up function provides important information about your journey, including average speed and fuel consumption, exterior temperature, range of the fuel tank and destination of the optional RNS 510 DVD navigation/radio system. Optional on S and standard on all other models.



The **colour multifunction computer (Highline)** displays the same useful information as the monochrome version, keeping you fully informed about your journey. It also shows whether doors are open and enables you to choose the language you require. Optional on all models.

Cannot be specified in conjunction with multifunction leather trimmed steering wheel.



Elegant **'Vienna' leather** trim provides the ultimate in exclusivity, with a choice of stylish Corn Silk Beige or sporty Titan Black. The package includes heated front sports seats, and for additional comfort, the driver's seat also features electrically adjustable lumbar support. Long lasting, durable and easy to keep clean, leather is not only a classic, elegant and comfortable material, but also exudes a sense of luxury, enhancing the interior ambiance still further. Optional on SE and SE BlueMotion Technology models.

Some parts of leather interior will contain artificial leather.



The **Storage pack** includes a drawer beneath the front passenger's seat, luggage nets in the boot area, and storage trays in the overhead console, for all the items you need to keep close at hand. Optional on all models.



In the event of poor visibility, the **front fog lights with static cornering function** provides better illumination of the road ahead and are thus highly recommended for maximum safety. Optional on all models.



The **electric slide/tilt glass sunroof** can easily be operated at the touch of a button, enabling you to let light and fresh air into the interior, regardless of the weather conditions. Tinted glass ensures adequate sun protection. Optional on SE models.

## Wheels

Whether you're looking for a stylish 15 inch or a sporty lightweight 17 inch alloy wheel, Volkswagen offers a choice of wheel options for the Golf Plus, ensuring you find exactly what you want. And whichever you choose, there are three things of which you can be sure: its superior quality, design and driving characteristics.



Full size **6J x 15 steel wheels** with 195/65 R15 tyres give the S model its unmistakable stylish appearance. Standard on S and S BlueMotion Technology models. Please note: S BlueMotion Technology models are fitted with 195/65 R15 low rolling resistance tyres.



**'Atlanta'** 6½J x 16 alloy wheels with 205/55 R16 tyres add a touch of pure dynamism. Standard on SE and SE BlueMotion Technology models. Please note: SE BlueMotion Technology models are fitted with 205/55 R16 low rolling resistance tyres.



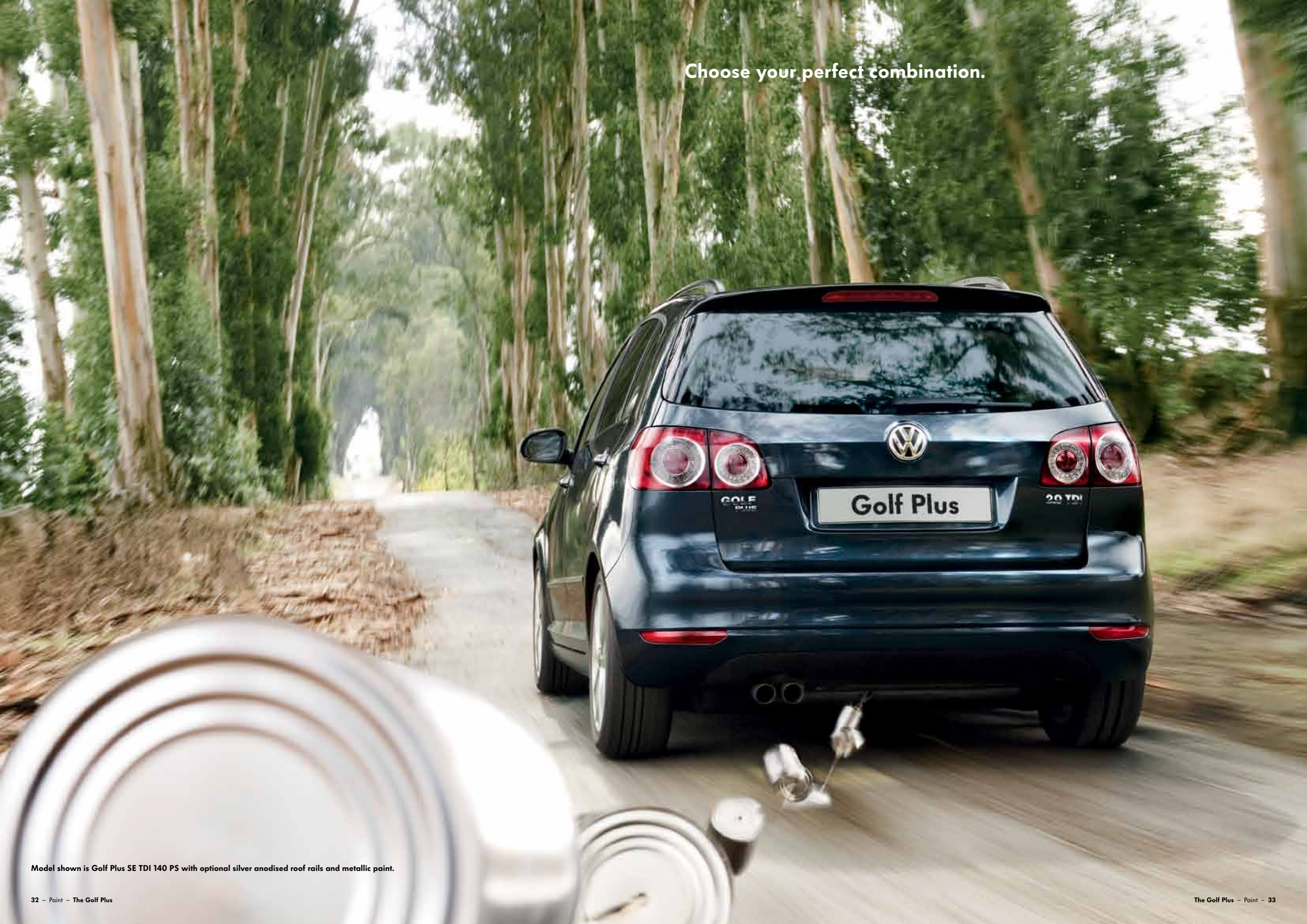
**'Seattle'** 7J x 17 alloy wheels with 225/45 R17 tyres, including sports suspension lowered by approximately 15 mm, provide a particularly sporty look to the exterior. Optional on SE models.



**'Wellington'** 6½J x 15 alloy wheels with 195/65 R15 tyres offer a distinctive look, due to the ten spokes in two different understated designs. Optional on S and S BlueMotion Technology models. Please note: S BlueMotion Technology models are fitted with 195/65 R15 low rolling resistance tyres.



Choose your perfect combination.



Model shown is Golf Plus SE TDI 140 PS with optional silver anodised roof rails and metallic paint.



Paint



Black  
Non-Metallic  
A1



Silver Leaf  
Metallic  
7B



Candy White  
Non-Metallic  
B4



Reflex Silver  
Metallic  
8E



Tornado Red  
Non-Metallic  
G2



Shadow Blue  
Metallic  
P6



Passion Red  
Metallic  
1U



Steel Grey  
Metallic  
X6



Georgia Blue  
Metallic  
5R



Deep Black  
Pearl Effect  
2T



Cashmere  
Metallic  
6R



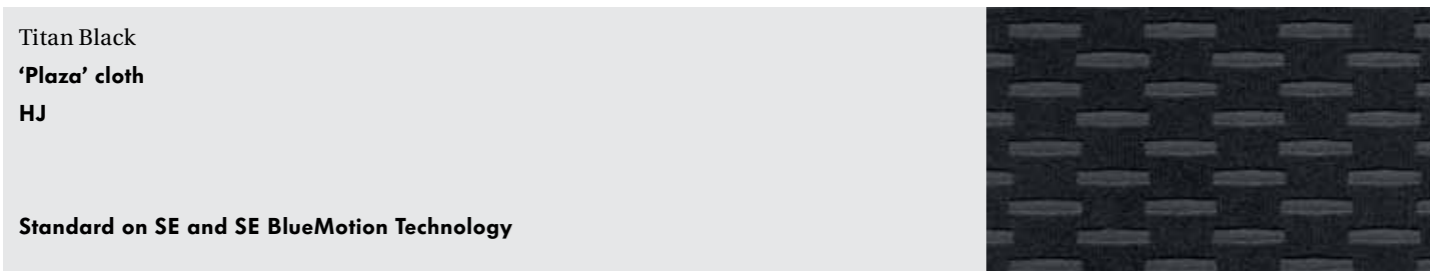
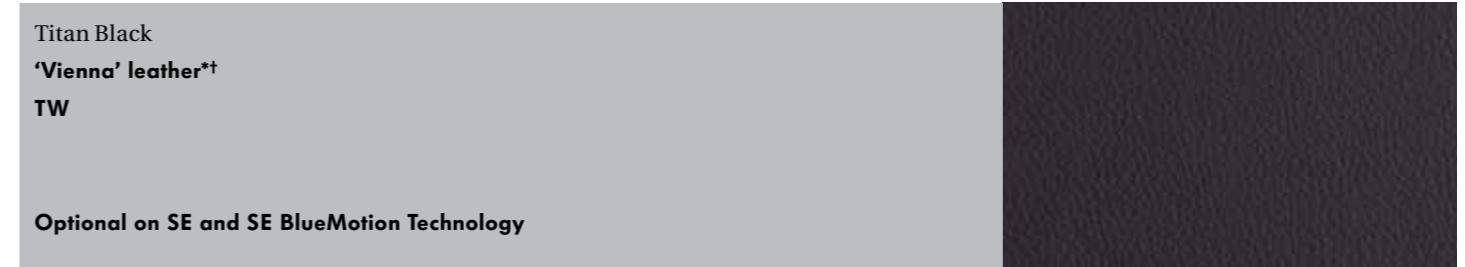
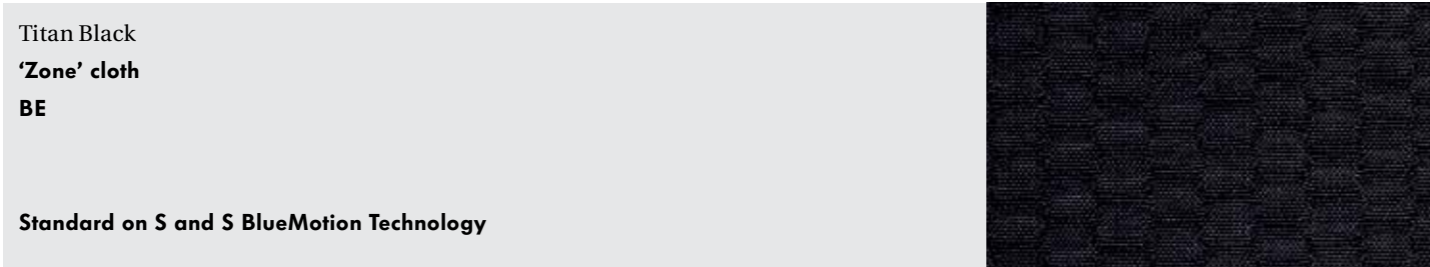
Blue Graphite  
Pearl Effect  
W9

Standard Optional at extra cost

Please note: The print processes do not allow exact reproduction of the paint colours.



## Upholstery



Standard Optional at extra cost

Please note: The print processes do not allow exact reproduction of the upholstery colours.

## Combinations

	Seat upholstery	Carpet	Dashboard	Black (A1)	Candy White (B4)	Tornado Red (G2)	Passion Red Metallic (TU) *	Georgia Blue Metallic (5R) *	Cashmere Metallic (6R) *	Silver Leaf Metallic (7B) *	Reflex Silver Metallic (8E) *	Shadow Blue Metallic (P6) *	Steel Grey Metallic (X6) *	Deep Black Pearl Effect (2T) *	Blue Graphite Pearl Effect (W9) *
<b>'Zone' cloth</b> Standard on S and S BlueMotion Technology	Titan Black (BE)	Black	Titan Black/Titan Black	●	●	●	●	●	●	●	●	●	●	●	●
<b>'Plaza' cloth</b> Standard on SE and SE BlueMotion Technology	Titan Black (HJ)	Black	Titan Black/Titan Black	●	●	●	●	●	●	●	●	●	●	●	●
<b>'Vienna' leather **</b> Optional on SE and SE BlueMotion Technology	Titan Black (TW)	Black	Titan Black/Titan Black	○	○	○	○	○	○	○	○	○	○	○	○
	Corn Silk Beige (YY)	Black	Titan Black/Corn Silk Beige	○	○	○	○	○	○	-	-	○	○	○	○

\* Metallic and pearl effect paints and 'Vienna' leather upholstery are optional at extra cost.  
† Some parts of leather interior will contain artificial leather.

● Standard.  
○ Optional at extra cost.  
- Not available.



**Technical specification**

		<b>S</b> <b>1.2 TSI litre 85 PS</b>	<b>S, SE</b> <b>1.4 litre TSI 122 PS</b>	<b>S</b> <b>1.6 litre TDI 90 PS</b>	<b>S BlueMotion Technology, SE BlueMotion Technology†</b> <b>1.6 litre TDI 105 PS</b>	<b>S, SE†</b> <b>1.6 litre TDI 105 PS</b>	<b>SE</b> <b>2.0 litre TDI 140 PS</b>
<b>Engine</b>	Engine type	Four cylinder petrol	Four cylinder petrol	Four cylinder diesel	Four cylinder diesel	Four cylinder diesel	Four cylinder diesel
	Cubic capacity, ltrs/cc	1.2/1197	1.4/1390	1.6/1598	1.6/1598	1.6/1598	2.0/1968
	Max. output, PS <sup>(01)</sup> /kW	85/63	122/90	90/66	105/77	105/77	140/103
	at rpm	4800	5000	4200	4400	4400	4200
	Max. torque, lbs.ft./Nm	118/160	148/200	170/230	184/250	184/250	236/320
	at rpm	1500-3500	1500-4000	1500	1500-2500	1500-2500	1750-2500
Gearbox	Five speed manual	Six speed manual	Five speed manual	Five speed manual	Five speed manual	Six speed manual	Six speed auto DSG
		–	Seven speed auto DSG	–	Seven speed auto DSG†	Seven speed auto DSG†	–
<b>Weights, kgs</b>	With manual gearbox:						
	Unladen weight <sup>(02)</sup>	1355	1416	1440	1450	1446	1476
	Gross vehicle weight	1930	1970	2000	1970	2010	2040
	Payload <sup>(02)</sup>	650	629	635	595	639	639
	Axle load limit: Front	990	1040	1080	1050	1090	1120
	Rear	990	980	970	970	970	970
	With auto DSG:						
	Unladen weight <sup>(02)</sup>	–	1438	–	1471	1467	1501
	Gross vehicle weight	–	1990	–	1990	2030	2070
	Payload <sup>(02)</sup>	–	627	–	594	638	644
Axle load limit: Front	–	1060	–	1070	1110	1150	
Rear	–	980	–	970	970	970	
<b>Trailer load limits, kgs <sup>(03)</sup></b>	Braked 12% incline – manual gearbox	1100	1300	1400	1400	1400	1500
	– auto DSG	–	1300	–	1400	1400	1500
	Unbraked – manual gearbox	670	700	720	720	720	740
	– auto DSG	–	710	–	730	730	750
	Towbar load limit	75	75	75	75	75	75
Max. roof load	75	75	75	75	75	75	
<b>Performance</b>	Top speed (where law permits), mph (km/h)						
	– manual gearbox	108 (175)	121 (195)	108 (174)	116 (186)	114 (184)	127 (204)
	– auto DSG	–	121 (195)	–	116 (186)	114 (184)	126 (202)
	Acceleration, secs 0 - 62 mph – manual gearbox	13.4	10.2	13.5	12.1	12.1	9.8
– auto DSG	–	10.2	–	12.1	12.0	9.8	
ABI insurance group, 1 - 50 ‡	10E	15E	11E	15E	14E	19E	
<b>Environmental information</b>	Fuel grade, minimum	Unleaded, 95 RON	Unleaded, 95 RON	Diesel <sup>(04)</sup>	Diesel <sup>(04)</sup>	Diesel <sup>(04)</sup>	Diesel <sup>(04)</sup>
	Fuel tank capacity, galls/ltrs	12.1/55	12.1/55	12.1/55	12.1/55	12.1/55	12.1/55
	Official fuel consumption – manual gearbox, mpg/ltr per 100 km <sup>(05)</sup>						
	Urban	39.2/7.2	33.6/8.4	47.1/6.0	54.3/5.2	47.9/5.9	44.8/6.3
	Extra-urban	57.6/4.9	52.3/5.4	68.9/4.1	72.4/3.9	67.3/4.2	65.7/4.3
	Combined	48.7/5.8	43.5/6.5	60.1/4.7	65.7/4.3	58.9/4.8	55.4/5.1
	Official fuel consumption – auto DSG, mpg/ltr per 100 km <sup>(05)</sup>						
	Urban	–	35.3/8.0	–	56.5/5.0	48.7/5.8	40.9/6.9
	Extra-urban	–	53.3/5.3	–	68.9/4.1	64.2/4.4	60.1/4.7
	Combined	–	44.8/6.3	–	64.2/4.4	57.6/4.9	51.4/5.5
	Official CO <sub>2</sub> emission, g/km <sup>(06)</sup>						
	– manual gearbox	136	152	125	114	126	132
	– auto DSG	–	146	–	115	129	144
Emission class	EURO 5	EURO 5	EURO 5	EURO 5	EURO 5	EURO 5	
Noise, dB – manual gearbox	71.0	72.0	69.0	70.0	72.0	72.0	
– auto DSG	–	70.0	–	70.0	69.0	69.0	

† Seven speed automatic gearbox only available on SE and SE BlueMotion Technology models.

‡ Please note, as of December 2009 the insurance industry switched to a new 1 - 50 insurance scale.



## Technical specification (continued)

### Technical specification notes

- 01) The maximum power output figures are quoted in PS (or Pferdestärke, which is the metric equivalent of horsepower). To convert from metric to imperial horsepower, divide the PS figure by 1.0139.
- 02) Figures are calculated in accordance with manufacturer's criteria. The individual unladen weight depends on the specification of the vehicle, this then reduces the possible payload accordingly. The unladen weight and payload both include the fuel tank 90% full, driver (68 kg) and luggage (7 kg) in line with EU directive 95/48.
- 03) With increasing altitude the engine performance diminishes. From 1,000 m above sea level and for every 1,000 m thereafter 10% of the vehicle/trailer weight (trailer weight + gross vehicle weight) must be deducted.
- 04) The use of RME and FAME (bio diesel) is not possible.
- 05) Official fuel consumption according to EU Directive 99/94. The consumption calculation according to 1999/100/EC is based on the actual unladen weight of the vehicle. Additional specifications can lead to a higher weight class and hence to consumption figures of this higher weight class. The driving style, road and traffic conditions, environmental influences and vehicle condition can in practice lead to consumption figures, which may differ from those calculated with this standard.
- 06) The weight of a vehicle will influence the level of CO<sub>2</sub> emission it produces; as a result, vehicles with higher levels of specification and factory-fitted options may emit higher levels of CO<sub>2</sub>.

## Technology

### Engines

- Front transverse-installed engine
- 1.2 litre/85<sup>(01)</sup> (63 kW) petrol engine: EU5 compliant four cylinder in-line engine, two valves per cylinder and turbocharger module with electric boost pressure regulation. Die cast aluminium cylinder block, dual circuit cooling system, maintenance-free camshaft drive chain with hydraulic tensioner and oil pump driven via maintenance-free toothed chain. Internally routed crankcase breather system with non-return valve. Three way catalytic converter with lambda control
- 1.4 litre/122 PS<sup>(01)</sup> (90 kW) petrol engine: CAXA TSI engine with homogeneous mode (Lambda 1), stratified high-pressure start, double injection catalytic converter heating, turbocharger with waste gate, air-to-liquid charge-air cooling, maintenance-free timing chain, plastic intake manifold with integrated intercooler, continuous inlet camshaft timing adjustment, grey cast iron cylinder block, steel crankshaft, duo-centric oil pump, dual-circuit cooling system. Fuel system regulated according to requirements using high-pressure fuel pump with integrated pressure limiting valve
- 1.6 litre/90 PS<sup>(01)</sup> (66 kW) common rail diesel engine: EU5 emissions standard, four cylinder in-line engine, four valves per cylinder, aluminium-silicon alloy cylinder head, reduced piston crown volume (improves swirl generation in the cylinder), toothed backlash compensator, intake manifold with electric continual tumble flap control, electronically controlled common rail direct injection fuel system with Bosch high pressure pump (up to 1800 bar) and 8-hole piezo injector units, pre-supply electronic fuel pump, oil cooler, intercooler, low temperature exhaust gas recirculation, additional coolant pump, turbocharger with variable turbine geometry, catalytic converter and Diesel Particulate Filter (DPF)
- 1.6 litre/105 PS<sup>(01)</sup> (77 kW) common rail diesel engine: EU5 emissions standard, four cylinder in-line engine, four valves per cylinder, aluminium-silicon alloy cylinder head, reduced piston crown volume (improves swirl generation in the cylinder), toothed backlash compensator, intake manifold with electric continual tumble flap control, electronically controlled common rail direct injection fuel system with Bosch high pressure pump (up to 1800 bar) and 8-hole piezo injector units, pre-supply electronic fuel pump, oil cooler, intercooler, low temperature exhaust gas recirculation, additional coolant pump, turbocharger with variable turbine geometry, catalytic converter and Diesel Particulate Filter (DPF)
- 2.0 litre/140 PS<sup>(01)</sup> (103 kW) common rail diesel engine: EU4 emissions standard (EU5 compliant), four cylinder in-line engine, four valves per cylinder, aluminium-silicon alloy cylinder head, toothed backlash compensator, intake manifold with electric continual tumble flap control, electronically controlled common rail direct injection system with Bosch high pressure pump (up to 1800 bar) and 8-hole piezo injector units, pre-supply electronic fuel pump, oil cooler, intercooler, exhaust gas recirculation, additional coolant pump, turbocharger with variable turbine geometry, catalytic converter and Diesel Particulate Filter (DPF)

### Brakes

- Electronically controlled Anti-lock Braking System (ABS) with Electronic Brake-pressure Distribution (EBD)
- Diagonal twin-circuit brake system with ventilated front disc brakes and rear disc brakes
- Asbestos-free brake pads

### Steering

- Electro-mechanical steering rack
- Collapsible, height and lengthways adjustable safety steering column

## Technology (continued)

### Transmission

- Front wheel drive through asbestos-free single-plate dry clutch. Hydraulic clutch-mechanism. Five or six speed manual, six or seven speed automatic DSG gearbox with double joint half axles
- Five speed manual: 1.2 litre TSI 85 PS, 1.6 litre TDI 90 PS, 1.6 litre TDI 105 PS
- Six speed manual: 1.4 litre TSI 122 PS, 2.0 litre TDI 140 PS
- Six speed automatic DSG: 2.0 litre TDI 140 PS
- Seven speed automatic DSG: 1.4 litre TSI 122 PS, 1.6 litre TDI 105 PS

### Running gear

- Electronic Stabilisation Programme (ESP) including Electronic Differential Lock (EDL), Traction Control (ASR) and Countersteer Support
- Front suspension through coil springs with telescopic shock absorbers, all elements integrated in chassis legs
- Rear suspension with gas pressure shock absorbers and separate springs
- Wheel control: front through chassis legs and (lower) triangular wishbones (directionally stabilising steering roll radius)
- Wheel control: rear through four-link suspension with independent wheel suspension
- Front and rear anti-roll bar

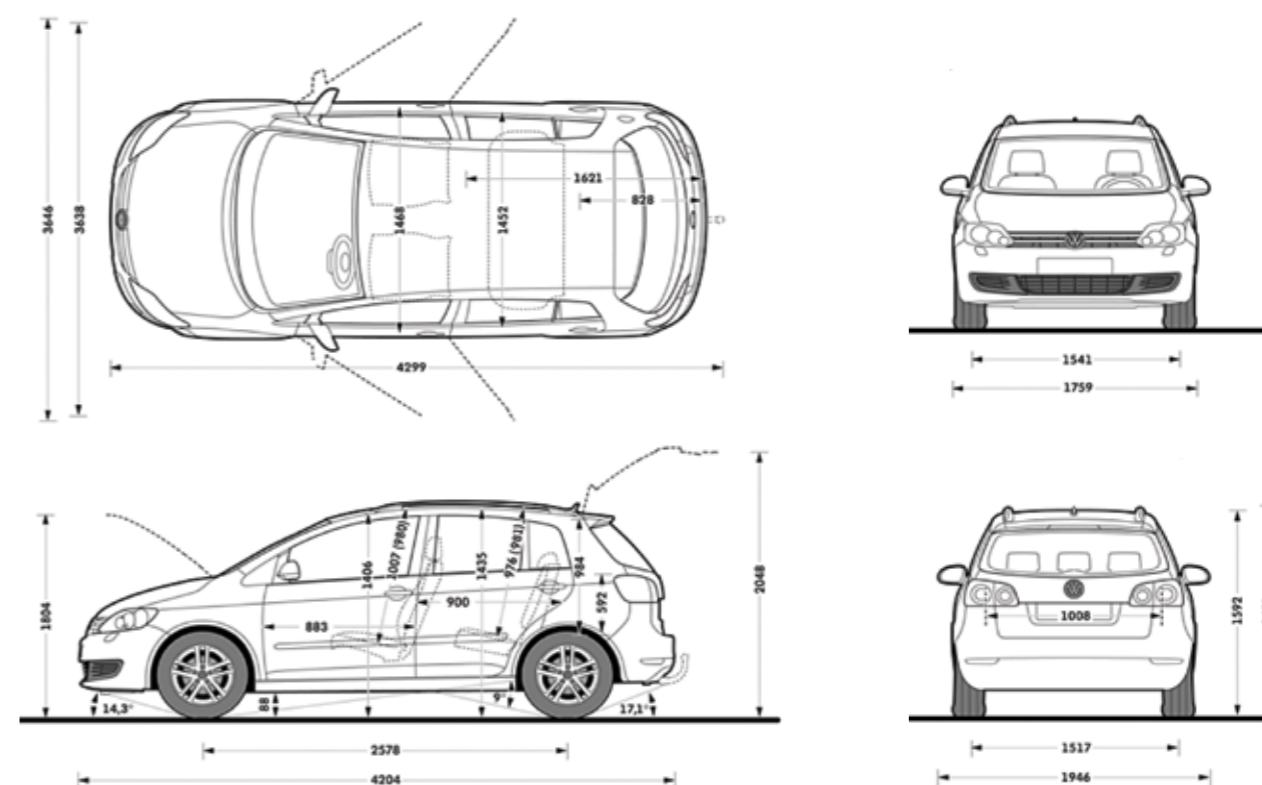
## Dimensions

### Exterior dimensions

Length, mm	4204
Width – excluding door mirrors, mm	1759
Width – opened front/rear doors, mm	3638/3646
Height, mm	1592
Height – opened bonnet/floor, mm	1804
Height – opened tailgate/floor, mm	2048
Wheelbase, mm	2578
Turning circle, mm	10800

### Interior dimensions

Effective headroom – front, mm (with sunroof)	1007 (980)
Effective headroom – rear, mm (with sunroof)	976 (981)
Elbow width, front, mm	1468
Elbow width, rear, mm	1452





## Volkswagen service

### The Volkswagen Warranty.

#### Three-year Warranty.

All Volkswagen Golf Plus' come with a three-year/60,000 miles warranty, which protects your car against the failure of most mechanical and electrical components due to manufacturing defects. This comprises a two-year manufacturer's warranty with unlimited mileage plus a further one-year/60,000 miles (whichever is soonest) Retailer Warranty. Should the mileage exceed 60,000 miles within the first two years, the manufacturer's two-year warranty will still be valid. If an additional warranty for subsequent years or higher mileage is desired, it may be purchased from an authorised Volkswagen retailer or repairer; however, this additional warranty must be purchased before the mileage reaches 60,000\*. Full details of the three-year warranty are available from your authorised Volkswagen retailer or repairer.

\* All warranty work must be completed by an authorised Volkswagen retailer or repairer.

#### Three-year Paint Warranty.

The paintwork of the Golf Plus is covered against manufacturing defects for a period of three years. Naturally, the Golf Plus must be cared for in compliance with the operating instructions which will be found in your vehicle handbook. Please consult your authorised Volkswagen retailer or repairer for full warranty details.

#### 12-year Body Protection Warranty.

The internal body sections and panels of the Golf Plus are covered against rusting through from the inside for 12 years. Naturally, the Golf Plus must be cared for in compliance with the operating instructions. Please consult your authorised Volkswagen retailer or repairer for full warranty details.

### Service Intervals.

Volkswagen are pleased to offer you a choice on how your Golf Plus is serviced. The appropriate selection is entirely dependent on how the car is likely to be driven and its general use. To help you identify which type of service would be most suitable, please refer to the following guide.

The Time and Distance Service is recommended for vehicles that will cover less than 10,000 miles in 12 months and if the vehicle is likely to be used in the following way:

- Predominantly urban driving, short journeys with frequent cold starts.
- Activities regularly producing high engine loading, e.g. frequent hill climbs, driving with vehicle fully loaded and towing.
- Uneconomical driving style using high rpms with heavy acceleration and heavy braking.

The service intervals for the Time and Distance Service are as follows:

- Oil change service            Every 10,000 miles/1 year (whichever is soonest).
- Interval service                Every 20,000 miles/2 years (whichever is soonest).
- Inspection service            Every 40,000 miles/3 years (whichever is soonest).

The LongLife Service is recommended for vehicles with a daily mileage of more than 25 miles where the vehicle is driven regularly mainly on longer distance journeys. The vehicle is driven mainly at a constant speed with minimum vehicle and engine loading, minimal towing and driven in an economical manner.

With the LongLife Service the vehicle can cover anywhere between 10,000<sup>†</sup> and a maximum of 18,000<sup>†</sup> miles or 24 months (whichever is soonest) between oil changes. Inspection service is typically in the third year of ownership and thereafter every second year, for vehicles with an approximate annual mileage of 10,000 miles.

<sup>†</sup> Please note that mileages are approximate as the service indicator system uses kilometres as the distance measurement. Please consult your authorised Volkswagen retailer or repairer for advice and full details.

### Approved Accessories.

A comprehensive range of accessories from alloy wheels to carpet mats is available to complement the factory-fitted option list. Volkswagen approved accessories purchased from and fitted by your authorised Volkswagen retailer at the point of vehicle sale will also benefit from the three-year vehicle warranty.

### Extended Warranty.

You may purchase additional protection from your authorised Volkswagen retailer or repairer, or contact 0870 9000 115.

### Volkswagen Insurance<sup>‡</sup>.

We want you to start enjoying your new car from day one and thanks to Volkswagen Insurance complimentary seven day cover, you can. Call free on 0800 316 7892 (lines are open Monday to Friday 8 am - 9 pm and Saturday 9 am - 5 pm), provide a few details and a cover note will be sent to your retailer. They will then tax your car and you can drive it away.

Visit [www.insurewithvolkswagen.co.uk](http://www.insurewithvolkswagen.co.uk) for details of the full range of insurance products available. Here you can also get a quote for your annual car insurance and buy it online too. All of our insurance products are designed to ease the pain of making a claim.

<sup>‡</sup> Volkswagen Insurance is a trading name of Volkswagen Insurance Service (Great Britain) Limited, an appointed representative of Volkswagen Financial Services (UK) Limited, Brunswick Court, Yeomans Drive, Blakelands, Milton Keynes MK14 5LR. Registered in England number 2835230. Volkswagen Insurance is sold, underwritten and administered by Allianz Insurance plc registered in England number 84638. Registered office 57 Ladymead, Guildford, Surrey GU1 1DB. Volkswagen Financial Services (UK) Limited and Allianz Insurance plc are authorised and regulated by the Financial Services Authority. Volkswagen Financial Services (UK) Limited and Allianz Insurance plc are not part of the same corporate group.

### Volkswagen Finance<sup>±</sup>.

Volkswagen Finance specialises in providing funding solutions for Volkswagen drivers. Whether your Volkswagen is for private or business use, you can choose from a range of funding options.

- Solutions – a personal contract plan
- Hire purchase
- Lease purchase
- Finance lease
- Contract hire

With all Volkswagen Finance products you can choose a fixed-cost maintenance plan to help you budget for your servicing and maintenance costs.

No matter what finance product you choose, your local Volkswagen retailer will be able to provide you with a personalised quote that could meet your budget and vehicle needs.

<sup>±</sup> Volkswagen Finance is a trading name of Volkswagen Financial Services (UK) Limited. An offer of finance depends on certain conditions. Available to people over 18 in the UK only.

### Volkswagen Roadside Assistance.

Every new car is registered for Volkswagen Roadside Assistance for one year. This provides vehicle home and roadside recovery in the unlikely event of a breakdown in the UK and Europe (subject to conditions). Volkswagen Roadside Assistance can also be purchased for subsequent years. For full details, please contact your authorised Volkswagen retailer or repairer.

### Tax Free Sales.

For full details, please contact your authorised Volkswagen retailer.

### CO<sub>2</sub> Emissions.

Increased weight of a vehicle, including higher trim levels and the addition of options will have a detrimental influence on the level of fuel consumption and CO<sub>2</sub> emissions produced.

The CO<sub>2</sub> and fuel consumption figures are obtained from tests on a representative vehicle of the type, conducted and approved in accordance with Council Directive 80/1268/EEC as amended by Directive 1999/100/EC (or later) on the approximation of the laws of the member states relating to the carbon dioxide emissions and the fuel consumption of motor vehicles.

### Please Note:

Some illustrations in this brochure do not necessarily reflect UK specifications and may not be available. In particular, controls and some items of equipment are positioned differently for the UK.

The specifications contained in this brochure are for information purposes only and are subject to change. If you require any specific feature, you must consult your authorised Volkswagen retailer who is regularly updated with any change in specification. Please check model availability and full specification details with your authorised Volkswagen retailer prior to ordering.

Note: We would like to advise you that telephone calls to Volkswagen Customer Care may be monitored and recorded as part of our training and quality assurance processes. All our monitoring and recording processes meet Ofcom regulations.